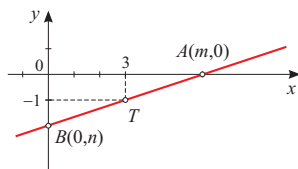


Zadatak 9. Točkom $T(3, -1)$ položi pravac tako da T bude polovište odsječka što ga na pravcu odsijecaju koordinatne osi.

Rješenje.



$$x_T = \frac{m + 0}{2} \implies 3 = \frac{m + 0}{2}$$

$$y_T = \frac{0 + n}{2} \implies -1 = \frac{0 + n}{2}$$

$$m = 6$$

$$n = -2$$

$$\frac{x}{6} + \frac{y}{-2} = 1$$