

Zadatak 20. Riješi algebarski i grafički jednadžbe:

1) $|x - 1| = 2$;

2) $(x - 1)^2 = 1$;

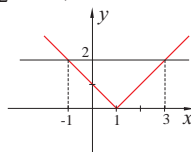
3) $[x] = -1$.

''

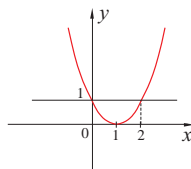
''
''
''
Rješenje.

1) (i) $-x + 1 = 2 \implies x_1 = -1$;

(ii) $x - 1 = 2 \implies x_2 = 3$;



2) $x_1 = 0, x_2 = 2$;



3) $x \in [-1, 0)$.

