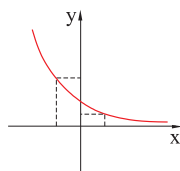
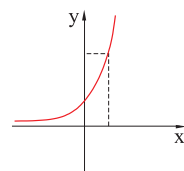
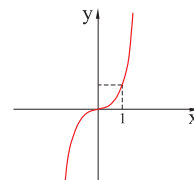
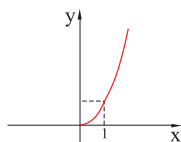
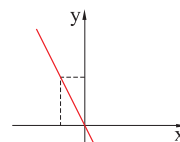
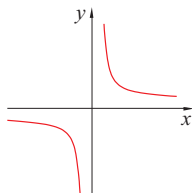


Zadatak 16. Nacrtnan je graf funkcije f . Nacrtaj graf njezine inverzne funkcije:

- 1) $f(x) = \frac{1}{x}$ (prva slika);
- 2) $f(x) = -2x$ (druga slika);
- 3) $f(x) = x^2, x \geq 0$ (treća slika);
- 4) $f(x) = x^3$ (četvrta slika);
- 5) $f(x) = 3^x$ (peta slika);
- 6) $f(x) = \left(\frac{1}{2}\right)^x$ (šesta slika).



Rješenje.

Svaki od nacrtnanih grafova zrcali se prema pravcu $y = x$.

